

CONFIGURATION LIST

HEI-REACT



GENERALITIES

This overview is intended to provide you with a general introduction. In addition, other system components are available upon request.

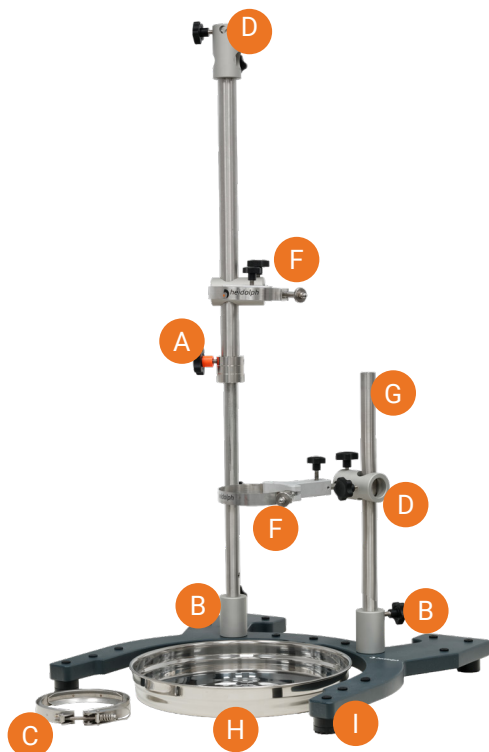
We would be happy to consult with you personally to find a solution that is perfectly tailored to your needs.



HEI-REACT BASE CONFIGURATIONS

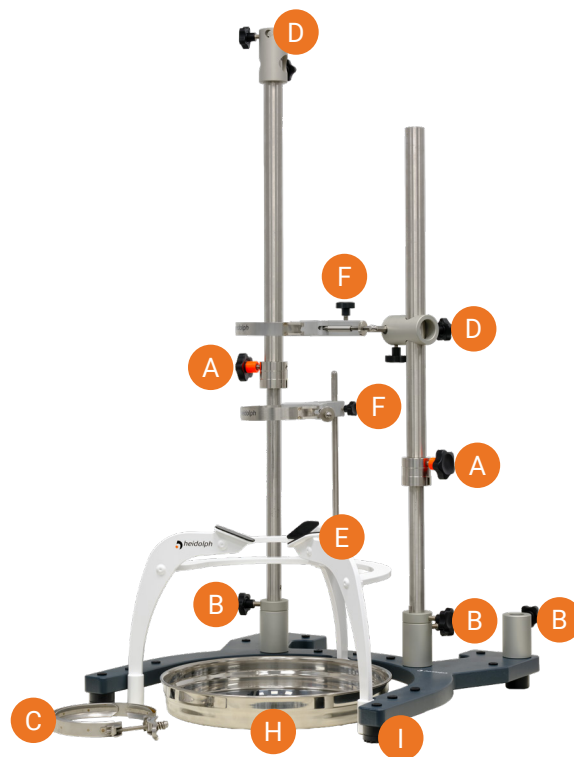
FRAMEWORK UP TO 500 ML

P/N: 532-02111-00



FRAMEWORK FROM 1 L

P/N: 532-02221-00



- A** Telescope Stand With Positioning Ring
- B** Multi Stand Holder
- C** Quick Change Vessel Clamp
- D** Universal Stand Attachment
- E** Tripod Vessel Support

- F** Attachment Set for Reactor Vessel & Neck Lid
- G** Stand Tube 400
- H** Drip Tray
- I** Framework Base
- +** Additional: Extension For Multi Stand Holder

FRAMEWORK ACCESSORIES



TELESCOPE STAND WITH POSITION RING

P/N: 11-300-012-15



MULTI STAND HOLDER

P/N: 11-300-012-61



EXTENSION FOR MULTI STAND HOLDER

P/N: 11-300-012-62



UNIVERSAL STAND ATTACHMENT

P/N: 11-300-012-63



TRIPOD VESSEL SUPPORT

P/N: 11-300-012-64



ATTACHMENT SET FOR REACTOR VESSEL & NECK LID

P/N: 11-300-012-25



STAND TUBE 400

P/N: 22-02-04-20-03



DRIP TRAY

P/N: 22-02-08-02-80

JACKETED REACTOR VESSELS

FEATURES

1,25:1 - Height-To-Diameter Ration

DN 100 - Polished Flat Flange



Description	Single Jacketed	Vacuum Jacketed
100 ml	541-00151-12	541-00151-22
250 ml	514-01151-12	514-01151-22
500 ml	514-02151-12	514-02151-22
1000 ml	514-03151-12	514-03151-22
2000 ml	514-04151-12	514-04151-22
3000 ml	514-05151-12	514-05151-22
5000 ml	514-06151-12	-



5 NECK LID

1xB19, 2xB24, 1xB29, 1xB34
P/N: 514-11123-04



QUICK CHANGE VESSEL CLAMP

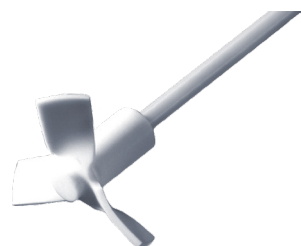
P/N: 11-300-003-43

OVERHEAD STIRRERS

HEI-TORQUE



	Details	Part Number
Hei-TORQUE Core	Torque: 40 Ncm; 2,3 kg	501-60410-00
Hei-TORQUE Core RS232	Torque: 40 Ncm; 2,3 kg; RS232	501-60430-00
Hei-TORQUE Expert 100	Torque: 100 Ncm	501-61010-00
Hei-TORQUE Expert 200	Torque: 200 Ncm	501-62010-00
Hei-TORQUE Expert 400	Torque: 400 Ncm	501-64010-00
Hei-TORQUE Ultimate 100	Torque: 100 Ncm; RS232, USB	501-61020-00
Hei-TORQUE Ultimate 200	Torque: 200 Ncm; RS232, USB	501-62020-00
Hei-TORQUE Ultimate 400	Torque: 400 Ncm; RS232, USB	501-64020-00



PR 39 PTFE

Pitched-Blade Impeller
L = Length
OD = Outer Diameter

L 450 mm x OD 50mm	509-39000-05
L 450 mm x OD 75mm	509-39000-04
L 600 mm x OD 75mm	509-039000-03



STIRRING SHAFT

11-300-012-66

TEMPERATURE PROBES



For Reactor Vessels up to 500 ml

	Part Number
PTFE Pt100	509-60400-00

Adapter

23-08-11-01-04

Adapter PTFE Pt100 - 8 mm Diameter | 400 mm length

For Reactor Vessels from 1000ml

PTFE Pt100 500 mm* (for 1000-3000 ml)	509-60500-00
---------------------------------------	--------------

PTFE Pt100 600 mm* (for ≥5000 ml)

509-60600-00

Adapter

23-08-11-01-02

Adapter PTFE Pt100 - 9 mm Diameter | Length depending on vessel size

THERMOSTATS

Open Baths & Circulators

Dynamic Temperature Control Systems



	Huber CC-K6	Huber Ministat 230	Huber Ministat 240	Huber Petite Fleur	Huber Unistat Tango
Filling Volume Min. (L)	2,5	3,0	3,5	1,5	1,5
Temperature Stability (K)	±0,02	±0,02	±0,02	±0,02	±0,02
Temperature Range	-25 to 200°C	-45 to 200°C	-40 to 200°C	-40 to 200°C	-45 to 250°C
External Sensor Connection	Pt100	Pt100	Pt100	Pt100	Pt100
Heating Power (kW)	1,6 - 2,1	1,6 - 2,1	1,8 - 2,1	1,6 - 2,0	3,0
Cooling Power (kW at 0°C)	0,15	0,38	0,55	0,45	0,70
Part Number	531-40001-00	531-40002-00	531-40003-00	531-40004-00	531-40005-00

THERMOSTAT CONNECTIONS



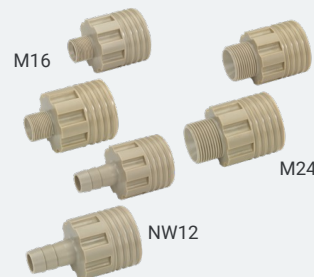
UNIVERSAL DRAINDOWN-MANIFOLD

P/N: 11-300-012-57

HOSE SET FOR A TWO VESSEL REACTION

P/N: 11-300-012-22

ALTERNATIVE TO UNIVERSAL DRAINDOWN-MANIFOLD



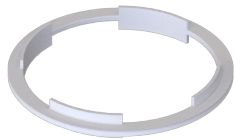
PEEK VESSEL SIDE ARM CONNECTOR

M16 P/N: 23-09-03-01-04
for all thermostats except Unistat Tango

M24 P/N: 23-09-03-01-61
for Unistat Tango

NW12 P/N: 23-09-03-01-18
for units no in Heidolph Portfolio

GLASSWARE



PTFE SUPPORT COLLAR FOR FEP O-RING - DN 100

P/N: 23-03-04-02-76



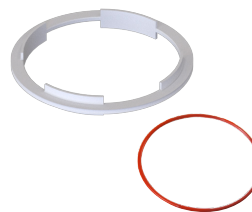
FFKM CHEMRAZ O-RING - DN 100

P/N: 23-30-01-09-14



FEP ENCAPSULATED SILICONE O-RING

P/N: 23-30-01-01-39



SET O-RING SEAL - DN 100

P/N: 11-300-012-65



CONDENSER RODAVIS

P/N: 15-300-001-33



90° ADAPTER, B29 TO GL14

P/N: 15-300-003-54



GRADUATED DROPPING FUNNEL EQUALIZING ARM

250 ml - B24 P/N: 15-300-003-56
500 ml - B24 P/N: 15-300-003-57



SWAN NECK ADAPTER

Angled B24 to Vertical B24 P/N: 15-300-003-52
Vertical B29 to Vertical B29 P/N: 15-300-003-53



REFLUX DIVIDER KIT

P/N: 15-300-003-61



REFLUX DIVIDER WITH VAPOUR TEMP KIT

P/N: 15-300-003-62



GAS PURGE ADAPTER, B34 TO GL14

P/N: 15-300-003-63



VALVED RIGHT ANGLED LIQUID INLET ADAPTER, B24 TO GL14

P/N: 15-300-003-58



OIL BUBBLER

P/N: 15-300-003-60



SOLID ADDITIONS FUNNEL, B34

P/N: 15-300-003-55



GLASS CONE STOPPER

B19 P/N: 15-300-003-48
B24 P/N: 15-300-003-49
B29 P/N: 15-300-003-50
B34 P/N: 15-300-003-51



PTFE HOSE ADAPTER

B19 for NW12 Tubing
P/N: 23-08-1-01-06



ADAPTER RODAVISS

B34 to GL25 P/N: 15-300-003-64
B24 to 2 x GL14 P/N: 15-300-03-59

SWIVEL pH PROBE ADAPTER, GL25

Swivel 12mm P/N: 23-30-01-09-18

INTERNATIONAL

Heidolph Scientific Products GmbH

Walpersdorfer Str. 12 | 91126 Schwabach, Germany
Phone: +49 9122 9920-67 | sales@heidolph.de

NORTH AMERICA

Heidolph North America

1235 N. Mittel Blvd, Suite B | Wood Dale, IL 60191
Phone: (224) 264-9600 | hello@heidolph.com

CHINA

Heidolph Instruments Shanghai Ltd.

Room 305, Building MT1 | Shanghai Wanxiang Enterprise Center
No 229 Haowen Road | Minhang District, Shanghai
Phone: +86 21 6093 9799 | sales@heidolph-instruments.cn

SOUTH KOREA

Heidolph Korea Ltd.

#1507, Bldg B. 70 | Dusan-ro, Geumcheon
Seoul, Republic of Korea
Phone: +80 70 8064 7152 | sales@heidolph.kr

www.heidolph.com



Copyright 2025, Heidolph Scientific Products GmbH

Not to be reproduced in part or in its entirety without the approval of the publisher. Images are shown for illustration only and may include other equipment or accessories in use.

All data provided is subject to technical changes and errors.