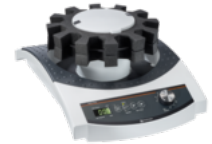


# Multi Reax 115V

## Technical datasheet



|                                    |  |
|------------------------------------|--|
| <b>Dimensions (W × H × D)</b>      | 270 × 172 × 410 mm   |
| <b>Weight</b>                      | approx. 10 kg  |
| <b>Maximum permissible load</b>    | 1.5 kg   |
| <b>Drive</b>                       | Asynchronous motor   |
| <b>Speed range</b>                 | 150 – 2,000 rpm; Indicator: digital  |
| <b>Protection class (EN 60529)</b> | IP30   |
| <b>Acoustic pressure</b>           | < 45 dB (A), in accordance with IEC 61010  |
| <b>Rated voltage</b>               | 230 V / 50 Hz, 110 V / 60 Hz   |
| <b>Protection class</b>            | I  |
| <b>Overvoltage category</b>        | n.a.   |
| <b>Degree of pollution</b>         | n.a.   |
| <b>Power input</b>                 | 50 W   |
| <b>Operating temperature</b>       | 5 °C – 31 °C at up to 80 % rel. humidity   32 °C – 40 °C at up to 50 % rel. humidity (decreasing linearly) |
| <b>Installation altitude</b>       | up to 2,000 m asl  |
| <b>Overheat protection</b>         | self-resetting   |
| <b>Speed control</b>               | n.a.   |
| <b>Usable area</b>                 | n.a.   |
| <b>Movement</b>                    | circular vibrating   |
| <b>Orbit</b>                       | 3 mm   |

|   |      |
|---|------|
| <b>Fuse</b>                                   | n.a. |
| <b>Permissible mains voltage fluctuations</b> | n.a. |
| <b>Bottle dimensions</b>                      | n.a. |