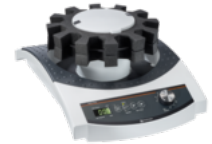


# Multi Reax

## Technical datasheet



<b>Dimensions (W × H × D)</b>	270 × 172 × 410 mm
<b>Weight</b>	approx. 10 kg
<b>Maximum permissible load</b>	1.5 kg
<b>Drive</b>	Asynchronous motor
<b>Speed range</b>	150 – 2,000 rpm; Indicator: digital
<b>Protection class (EN 60529)</b>	IP30
<b>Acoustic pressure</b>	< 45 dB (A), in accordance with IEC 61010
<b>Rated voltage</b>	230 V / 50 Hz, 110 V / 60 Hz
<b>Protection class</b>	I
<b>Overvoltage category</b>	n.a.
<b>Degree of pollution</b>	n.a.
<b>Power input</b>	50 W
<b>Operating temperature</b>	5 °C – 31 °C at up to 80 % rel. humidity   32 °C – 40 °C at up to 50 % rel. humidity (decreasing linearly)
<b>Installation altitude</b>	up to 2,000 m asl
<b>Overheat protection</b>	self-resetting
<b>Speed control</b>	n.a.
<b>Usable area</b>	n.a.
<b>Movement</b>	circular vibrating
<b>Orbit</b>	3 mm

<b>Fuse</b>	n.a.
<b>Permissible mains voltage fluctuations</b>	n.a.
<b>Bottle dimensions</b>	n.a.