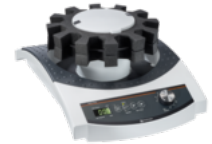


Multi Reax 220V

Technical datasheet



Dimensions (W × H × D)	260 × 168 × 381 mm
Weight	approx. 10 kg
Maximum permissible load	1.5 kg
Drive	Asynchronous motor
Speed range	150 – 2,000 rpm; Indicator: digital
Protection class (EN 60529)	IP30
Acoustic pressure	< 45 dB (A), in accordance with IEC 61010
Rated voltage	230 V / 50 Hz, 110 V / 60 Hz
Protection Class	I
Overvoltage category	n.a.
Degree of pollution	n.a.
Power input	50 W
Operating temperature	5 °C – 31 °C at up to 80 % rel. humidity 32 °C – 40 °C at up to 50 % rel. humidity (decreasing linearly)
Installation altitude	up to 2,000 m asl
Overheat protection	self-resetting
Speed control	n.a.
Usable area	n.a.
Movement	circular vibrating
Orbit	3 mm

Fuse	n.a.
Permissible mains voltage fluctuations	n.a.
Bottle dimensions	n.a.
Interfaces	