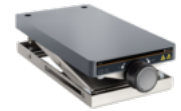


e-Lift
Technical datasheet



Weight	6 kg
Maximum permissible load	10 kg
Protection class (EN 60529)	Mechanic IP02, electronics IP42
Usable area	185 × 350 mm
Power supply	Via magnetic stirrer/USB-C cable
Footprint (w × d)	185 × 390 mm, incl. handwheel
Height	min. 95 mm, max. 275 mm