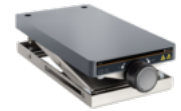


e-Lift  
**Technical datasheet**



<b>Weight</b>	6 kg
<b>Maximum permissible load</b>	10 kg
<b>Protection class (EN 60529)</b>	Mechanic IP02, electronics IP42
<b>Usable area</b>	185 × 350 mm
<b>Power supply</b>	Via magnetic stirrer/USB-C cable
<b>Footprint (w × d)</b>	185 × 390 mm, incl. handwheel
<b>Height</b>	min. 95 mm, max. 275 mm